



THE SCHOONER
RAJA LAUT

Private Yacht Charter in Southeast Asia



Let the adventure begin...

Raja Laut is a brand new gaff rigged schooner designed along exquisite classic lines specifically for private charters and luxury expeditions in tropical waters. At 100 feet in length, this splendid sailing vessel can accommodate up to 12 guests in 6 spacious air-conditioned staterooms, all with private en suite bathrooms. Below decks she has a spacious galley and a large saloon but, with her thirty meters of flush deck and steady motion, most meals will be set up al fresco under the main boom while the guests enjoy the magnificent cruising grounds of Southeast Asia.

Raja Laut follows in great style in the wake of similar beautiful ships that undertook amazing journeys of exploration through Southeast Asian waters during the past centuries. Built in Borneo out of selected tropical hardwoods on well-tested European designs, Raja Laut combines classic charm with modern technology - making her own drinking water and equipped with the latest satellite communication systems and offshore internet connectivity.

With an experienced Captain at her helm, supported by her friendly crew, divemaster and gourmet chef, Raja Laut is clearly in a class by herself, providing luxury expeditions in what is arguably the most exiting cruising destination in the world.



Classic Lines, Beauty by Design, Journeys to Savour

With old-fashion craftsmanship, classic lines and a rich timber interior Raja Laut has an authentic feel. She is ideally suited to tropical cruising with 6 beautifully appointed cabins, en suite bathrooms, air-conditioning, and all the comforts you can expect of a modern yacht, including satellite phone & internet communications system.

The air-conditioned interior features a dining area and a lounge area with plasma TV, DVD player and music systems. There are also areas above deck designed for dining, reading, sunbathing and general relaxation whilst enjoying the beauty of your surroundings.

For those with a craving for SCUBA Raja Laut comes fully equipped with her own compressor, dive gear and divemaster, whilst kayaks, water skis and surfboards provide plenty of fun above the water.

Whether you wish to embrace the serenity and tranquility of a tropical cruise, or explore the most ecologically diverse seas in the world, the Raja Laut crew will ensure that smooth sailing and gourmet cuisine will accompany you throughout, so that time and time again the Raja Laut and her journeys offer an experience to savour.





Culture, Nature, Underwater Discovery

For navigators, explorers and naturalists, Southeast Asia holds an allure matched by few other places on earth. The Raja Laut cruising grounds in Southeast Asia offer idyllic tropical islands, jungles, rivers, and an array of limitless adventures and experiences. Experience personalised itineraries which can range from simple overnight trips to month-long journeys.

Expeditions can take you through the islands of the Andaman Sea where natural wonders and wildlife are found in abundance, or into Indonesian waters where stunning islands, cultural havens and historical sites are within easy access. Wine and dine in style with the many flavours of the region brought together on your journey.

Explore the region's internationally renowned dive spots, from the Similan islands of Thailand, to the vertical walls of Sipadan in Malaysia, or the mega biodiverse hotspots around West Papua.

Cross the imaginary Wallace line to the Komodo National Park and beyond, where the flora and fauna of subtropical Asia make a sudden and dramatic change into those typical of Australasia. For those with a craving for unbeaten paths and breathtaking seclusion the 17,000 islands of Indonesian Archipelago are yours to explore.

Let the adventure begin.





Recapturing the Spirit of a Bygone Era

To sail the *Raja Laut* is to fall into a classic Joseph Conrad adventure story. Indeed *Raja Laut* is a Malay name meaning “King of the Seas” inspired from a bygone era in what was known as the Malay Archipelago - an area stretching from Southern Thailand, through Malaya, Borneo, to the spiceries of Indonesia. *Raja Laut* was the honorary title bestowed by the Sultan of Gunung Tabor in East Borneo on William Lingard, a man whom Conrad actually met as a young sailor, and who provided the inspiration for Conrad’s first adventure novels.

The Malay Archipelago was without a doubt an inspiring part of the world for the young Conrad: complex, fascinating, full of possibilities and adventure, full of expression and vibrancy; a crossroads between Eastern & Western civilizations, with a multitude of cultures and races, kingdoms, coveted spices, and at its heart the magical and untamed jungles of Borneo, with its wildlife, headhunters, traders and privateers. The magic still remains today, in what is probably the world’s most exciting cruising destination.

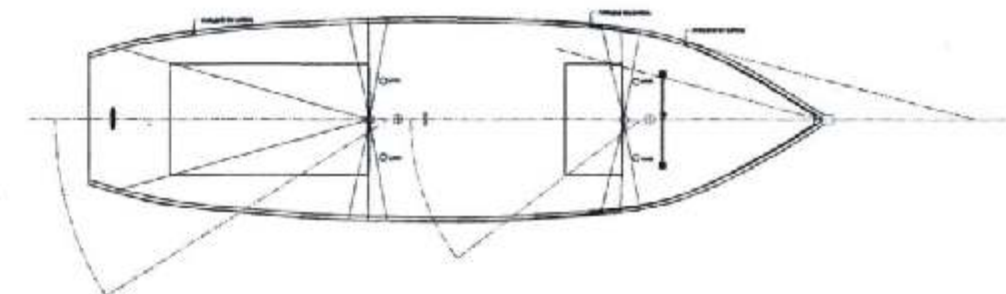
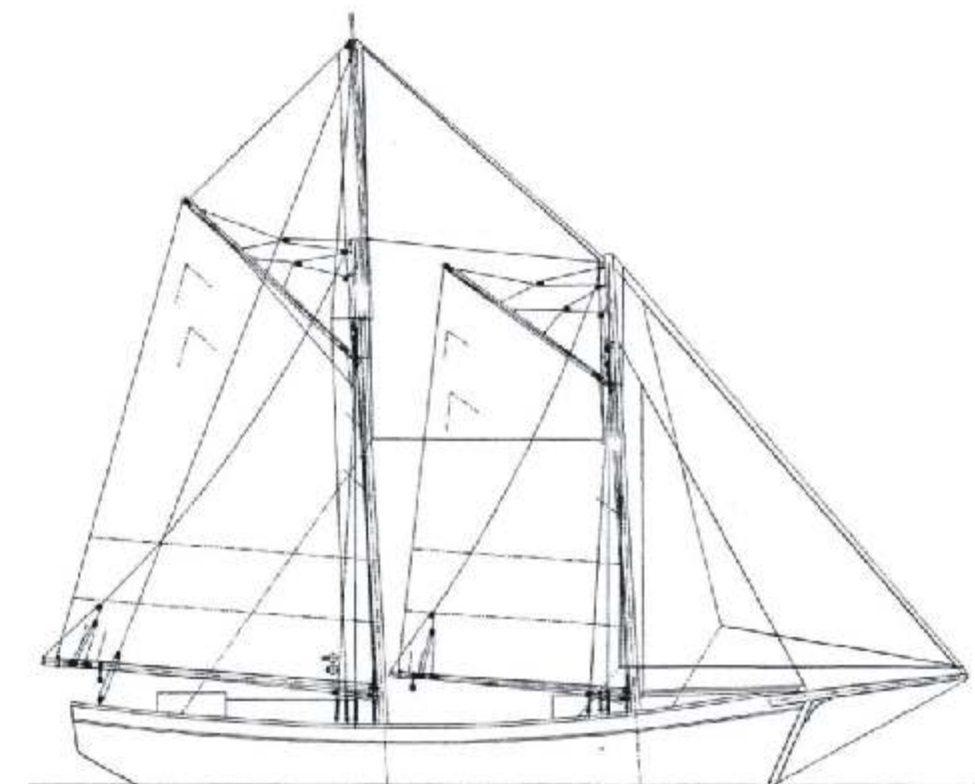
Raja Laut herself perpetuates the rich maritime tradition of the gaff-rigged schooner, whose tried and tested designs were a mainstay of the ‘Great Age of Sail’. The schooner was built on the shores of Borneo by her French designer, Georges Carraz, who has lived and worked in Southeast Asia for 30 years, and has during this time developed an intimate knowledge of the people and of the boat building traditions of this region. Her hull lines are typical of the European or American schooners however a closer inspection reveals the exotic influences of Asia.





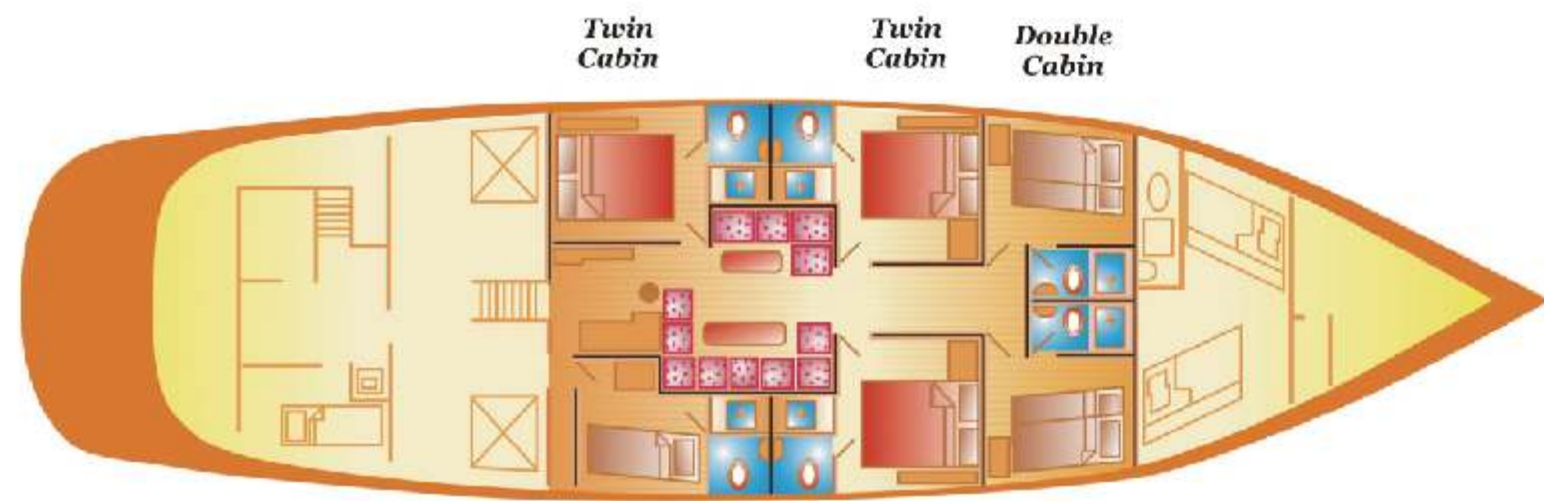
Specifications

Port of Registry	- Labuan, Malaysia
Builder	- Georges E.K. Carraz
Rig Designer	- Bosgraaf Yacht & Boat Design, Amsterdam
Type	- Gaff-rigged Topsail Schooner
Length	- 30m
Beam	- 7.2m
Draft	- 2.8m
Displacement	- 115GT
Main Engine	- Yanmar 300HP Turbo, 6HADTE
Fuel Capacity	- 7,000 litres
Sail Area	- 400 m ²
Top Speed	- 10 knots
Top Sailing Speed	- 11 knots
Freshwater	- 3,000 litres
Watermaker	- 200 litres/hour by reverse osmosis
Air conditioning	- Fully air-conditioned below deck
Safety	- EPIRB, 25 man life raft
Communications	- Inmarsat F33, satellite phone & internet
Navigation	- Simrad GPS, Chart & Echo Radar System
Tenders	- 4.7m inflatable with 60hp Yamaha outboard
Diving Compressor	- Bauer Capitano Compressor x 1
Diving Equipment	- 8 Complete Dive Sets
Sports Equipment	- Kayaks, Waterskies, Snorkeling, Surfboards
Passengers	- 12 guests overnight
Day & Sunset Cruises	- 50-60 guests



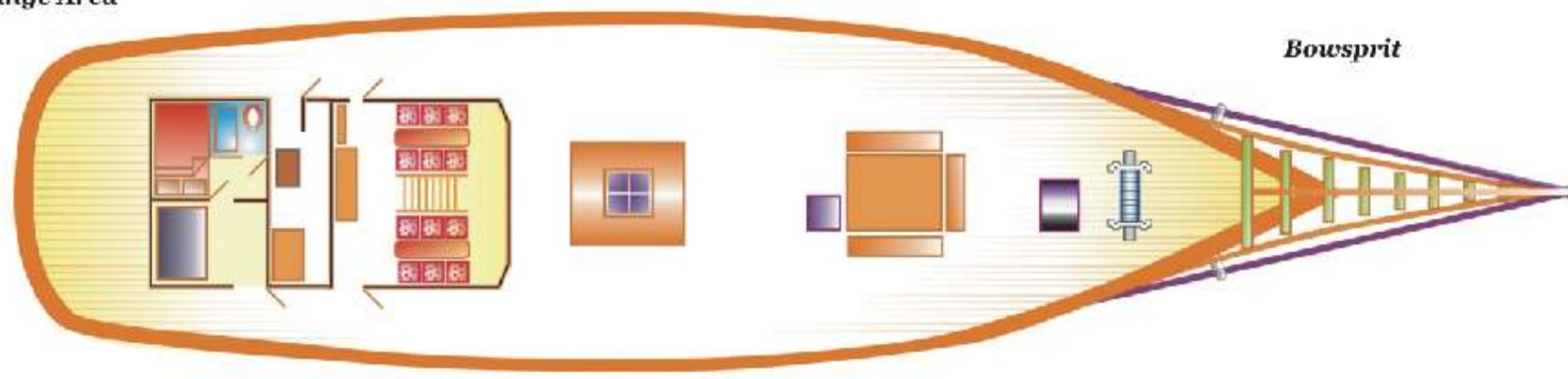
"Created specifically for private charters following timeless and tested designs, the quality of construction ensures performance, safety, stability & comfort."

Layout



Cold Storage & Utilities **Engine Room** **Lounge** **Twin Cabin** **Double Cabin** **Crew Area**

Aft Lounge Area



Captains Cabin & Navigation Room **Dining Area (Inside)** **Dining Area (Outside)** **Diving & Compressor Area** **Bowsprit**





Borneo Tall Ships Sdn. Bhd., F-4-22, Plaza Tanjung Aru,

yachting & life style